

### Ceramic Insulated Channel Strip Heaters

**Channel Strip Heaters** have proven to be extremely efficient and dependable as a heat source for surface heating in hundreds of industrial and commercial applications.

For surface mounting installations, Channel Strip heaters must be securely clamped along their entire length to a smooth metal surface. When supported by mounting tabs, the terminal end should be secured firmly. Opposite end should be loose to allow for thermal expansion.

### TEMPCO offers Channel Strip Heaters in three rectangular sizes

#### 1" WIDE BY 5/16" THICK

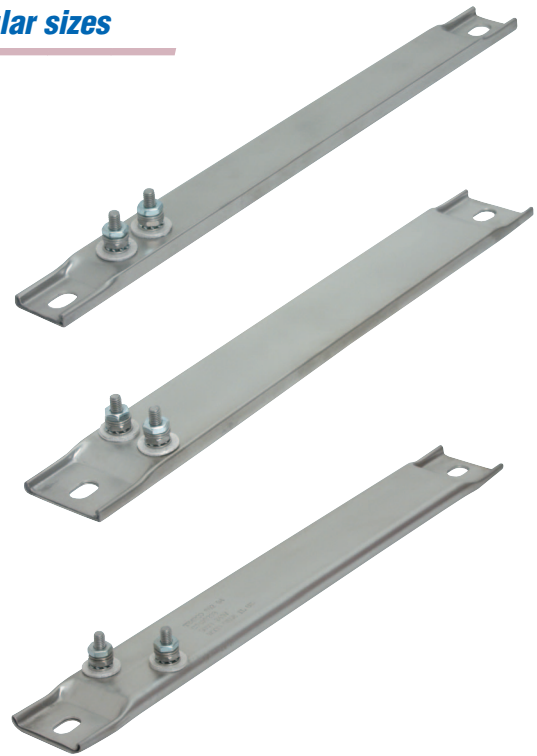
Available with or without mounting tabs. When supplied with Type L lead wire termination, mounting tabs are not available.

#### 1-1/2" WIDE BY 5/16" THICK

Available with or without mounting tabs. When supplied with Type L lead wire termination, mounting tabs are not available.

#### 1-1/2" WIDE BY 3/8" THICK

Available with or without mounting tabs. When supplied with Type L lead wire termination, mounting tabs are not available. (3/8" thick heaters have radius corners)



**Standard Specifications and Tolerances** of Channel Strip Heaters  
If tighter tolerances are required, consult Tempco.

#### PERFORMANCE RATINGS

- Maximum Sheath Temperature:** 1200°F (650°C)
- Nominal Watt Density:** 20 W/in<sup>2</sup> (3.1 W/cm<sup>2</sup>)
- Maximum Watt Density:** 45 W/in<sup>2</sup> (dependent on design parameters)

#### ELECTRICAL SPECIFICATIONS

- Maximum Voltage:** 480VAC (dependent on design parameters)
- Voltage Options:** Single-Phase, Three-Phase or Dual Voltage
- Maximum Recommended Voltage with Leads:** 480V
- Maximum Amperage:** Lead Wire Termination: 10 amp  
Screw Terminations: 10-32UNF—25 amp
- Resistance Tolerance:** +10%, -5%
- Wattage Tolerance:** +5%, -10%

#### PHYSICAL SIZE CONSTRUCTION LIMITATIONS

- Width**
- 1" and 1-1/2" wide heaters ..... +.000, -.010"
- Length**
- Up to 24" ..... ±1/16"
- Over 24" ..... ±1/8"
- Mounting Slot Size**
- Standard ..... 5/16" × 1/2"
- Special Bushings ..... 1/2" × 5/8"