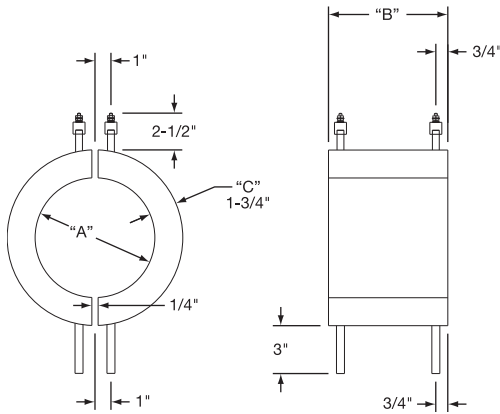
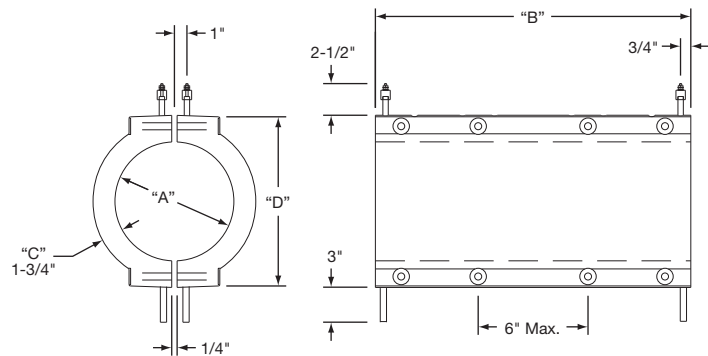


Cast-In Band Heater Ordering Information

Cast-In Band Heater Strap Clamping



Cast-In Band Heater Bolt Clamping



Recommended dimensions shown.

Ordering Information

To process your order or quotation, please specify the following information.

Variable Dimensions

Inside Diameter "A" _____ Length "B" _____ Thickness "C" _____ "D" _____

Material Specifications

Aluminum Bronze Brass

Electrical Specifications

Watts each half _____ Volts each half _____ Phase _____

Terminal Style

"S" Post Terminals "C4" Ceramic Cover "F" Plain Leads
 "R" 90° Blockhead "T7" Post Terminals "MR" Moisture Resistant
 "E" Right-Angle Lugs "T" Post Terminals "TS" Leads and Shrink Sleeve
 "R1" Armor Cable Leads "R1A" SS Wire Overbraid
 "R2" Blockhead and Through Hole See Pages 3-54 and 3-55 for additional Terminations

Terminal Protection Box

None "C2" Standard "C7" 1 Box for both halves "EP" Explosion Resistant
 "P2" High Temperature Quick-Disconnect "MPR" Moisture Resistant Box
 "MR1" Rigid Moisture Resistant Box "CB1" Cast Aluminum Box

Clamping Style

Straps Bolt Clamp

Cooling Tube Specifications

1/4" O.D. SS 3/8" O.D. SS 1/2" O.D. SS
 3/8" O.D. Incoloy® 1/2" O.D. Incoloy® Dual Cooling Tubes
 Standard Wall Thickness Other Wall Thickness, Specify _____
 (See page 3-5 for Standard Wall Thickness Information)

Cooling Tube Fittings

Non-exposed 3/8" NPTF "HS" Hi-Seal Fitting "RA" 90° Copper Elbow
 Non-exposed 1/2" NPTF "RT" 90° Threaded Elbow
 "FF" Flared Seal "R3" Straight Threaded

Surface Finish

125 RMS Standard or to Customer Specifications

Special Cast-In Features

Holes, Cutouts, Slots, Bevels, Mounting Studs, Stand-Offs and Taper Angles
For special features a detailed drawing is required.

⚠ WARNING: Cancer and Reproductive Harm - www.P65Warnings.ca.gov.