

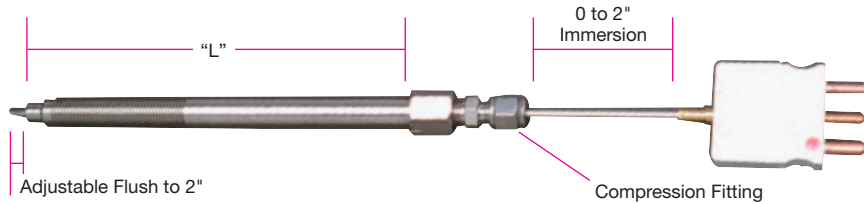
Melt Bolt RTDs for Plastics Extruders or Injection Molding Machines

Design Features

- * 3/16" diameter Probe
- * 100 ohm Class B element per IEC 751
- * 3-wire circuit
- * Can be installed wherever standard melt thermocouples are used
- * Operating temp. 392°F (200°C), 900°F (482°C) available
- * Available in 3" and 6" bolt designs
- * Bolts and Probes are 300 series stainless steel

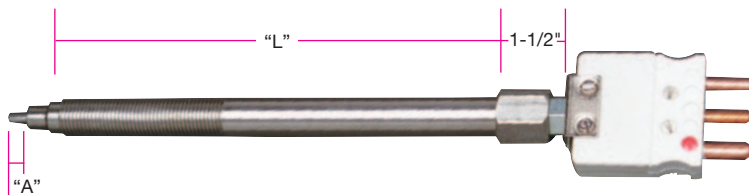
Style RT1—Adjustable Tip

- RTD tip immersion length can be field adjusted from flush to 2"
- Eliminates excess inventory



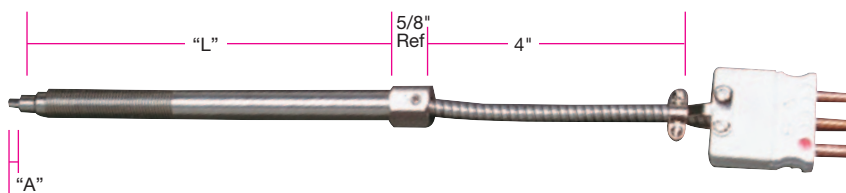
Part Number	
L = 3"	L = 6"
RTP00001	RTP00002

Style RT2—Rigid Plug Mount Fixed Tip



Part Number	"A" (in)	"L" (in)
RTP00003	Flush	3
RTP00004	1/4	3
RTP00005	1/2	3
RTP00006	3/4	3
RTP00007	1	3
RTP00008	Flush	6
RTP00009	1/4	6
RTP00010	1/2	6
RTP00011	3/4	6
RTP00012	1	6

Style RT3—Flexible Mounted Plug



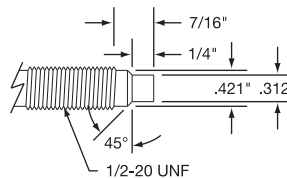
Part Number	"A" (in)	"L" (in)
RTP00013	Flush	3
RTP00014	1/4	3
RTP00015	1/2	3
RTP00016	3/4	3
RTP00017	1	3
RTP00018	Flush	6
RTP00019	1/4	6
RTP00020	1/2	6
RTP00021	3/4	6
RTP00022	1	6

Blank Melt Bolts

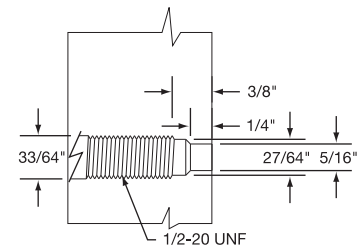
(See page 14-101)



Detailed Dimensions for Plastic Melt Bolts



Bolt-Tip Dimensions



Recommended drilling dimensions for proper mounting in extruder barrel.