

Temperature Controllers



Cartridge Type Thermostats

Thermostatic Cartridge Type Temperature Controls

Tempco Thermostatic Temperature Controls are proven, simple, sensitive temperature controls with an adjustable setpoint. The sheath is a temperature sensor that responds to the tempera-

ture of its environment by expanding and contracting, thereby mechanically actuating a set of contacts within. Use to accurately control temperature on hundreds of applications.

Specifications

Temperature Range:

1/4" dia. models: -100 to 500°F (-73 to 260°C)
1/2" and 5/8" dia. models: -100 to 600°F (-73 to 315°C)

Tube Shell Diameters:

1/4" dia. model: 0.249" +.000/-.004" actual
1/2" dia. model: 0.499" +.000/-.004" actual
5/8" dia. model: 0.625" +.000/-.004" actual

Contact Action: Slow make and break

External Materials: 304 Stainless Steel

Agency Approvals:



Sensitivity:

1/4" dia. model: As low as 1°F depending on application
1/2" and 5/8" dia. models: As low as 0.5°F depending on application

Accuracy: Dependent on application

Standard Termination:

1/4" dia. model: 8" long - #26 ga silver plated copper with Teflon® insulation
1/2" dia. model: 8" long - #20 ga stranded nickel clad copper with fiberglass insulation
5/8" dia. model: 8" long - #16 ga stranded nickel clad copper with fiberglass insulation

Standard Stock Thermostatic Controls

Insert Dia.	Contact Length	Action on Temp. Rise	Electric Rating (Amp-Volts)	Part Number
5/8"	3 5/8"	Open (NC)	10A@120VAC, 5A@240VAC	TEV01500
		Close (NO)	2A-120 VDC	TEV01501
1/2"	2 1/2"	Open (NC)	5A@120VAC, 3A@240VAC	TEV01400
		Close (NO)	1A@120VDC	TEV01401
*1/4"	1 1/16"	Open (NC)	1A@120VAC	TEV01200
		Close (NO)	1A@120VAC	TEV01201
5/8"	3 7/16"	Open (NC)	10A@120VAC, 5A@240VAC	TEV02500
		Close (NO)	2A-120 VDC	TEV02501
1/2"	2 5/16"	Open (NC)	5A@120VAC, 3A@240VAC	TEV02400
5/8"	3"	Open (NC)	10A@120VAC, 5A@240VAC	TEV03500
		Close (NO)	2A-120 VDC	TEV03501
1/2"	2"	Open (NC)	5A@120VAC, 3A@240VAC	TEV03400
		Close (NO)	1A@120VDC	TEV03401
*1/4"	3/4"	Open (NC)	1A@120VAC	TEV03200
		Close (NO)	1A@120VAC	TEV03201
5/8"	3"	Open (NC)	10A@120VAC, 5A@240VAC	TEV04500
		Close (NO)	2A-120 VDC	TEV04501
1/2"	2"	Open (NC)	5A@120VAC, 3A@240VAC	TEV04400
		Close (NO)	1A@120VDC	TEV04401
*1/4"	3/4"	Open (NC)	1A@120VAC	TEV04200
		Close (NO)	1A@120VAC	TEV04201
5/8"	3 5/16"	Open (NC)	10A@120VAC, 5A@240VAC	TEV05500
		Close (NO)	2A-120 VDC	TEV05501
1/2"	2 5/16"	Open (NC)	5A@120VAC, 3A@240VAC	TEV05400
		Close (NO)	1A@120VDC	TEV05401
*1/4"	1 1/4"	Open (NC)	1A@120VAC	TEV05200
		Close (NO)	1A@120VAC	TEV05201

*1/4" Thermostatic Controls have been discontinued and will no longer be available once stock has been depleted.

Ordering Information

State part number and special features if required. For special Thermostatic Controls, consult Tempco.

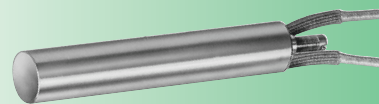
- * The 1/2" and 5/8" dia. models are UL recognized.
- * The 5/8" dia. model is CSA certified.
- * Factory pre-set temperature setpoint: specify temperature setpoint.
- * Extra lead length: specify length required.
- * Extended shell length, with sensitivity at the top or bottom: specify length required and sensitivity.

⚠ WARNING: Cancer and Reproductive Harm - www.P65Warnings.ca.gov.

Design Features

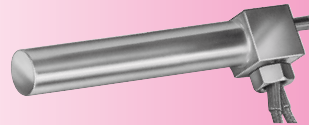
- * Flexible armor cable over leads: blockhead style B only. Specify length required.
- * Moisture resistant seal.
- * Moisture resistant or explosion resistant, N7, attached to a Type C coupling head thermostat; specify requirements.
- * Ground wire attached to the shell; specify length required.

SELECTION GUIDE



Type S Cartridge

Temperature controller for applications in metal, air, gas and many other mediums.



Type B Block Head

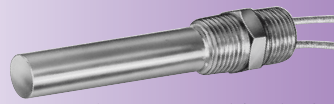
The block head style allows the thermostat to be mounted without the use of bushings.

Also excellent for making right-angle connections.



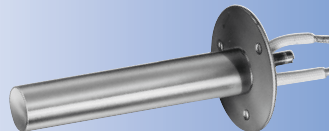
Type P Pipe Thread

Designed for mounting in tanks for temperature control of liquids or gases. A stainless steel bushing affords ease of mounting and a positive seal.



Type C Coupling Head

Designed to accept conduit or plumbing fittings to protect the screw and lead wires in adverse conditions.



Type F Flange

Designed to mount directly to duct or oven wall for the sensing of air or gas temperatures.

All Items Available from Stock